

FLYTE

Flyte Thermostatic Control Valve Trim with Metal Lever Handle

FLTH10



SHOWN IN FLYTE THERMOSTATIC CONTROL VALVE TRIM WITH METAL LEVER HANDLE | FLTH10

TECHNICAL DETAILS

ADA Compliance: Yes
 Control Valve Rough-in Depth Maximum: 4 1/4"
 Control Valve Rough-in Depth Minimum: 3 1/4"
 Diverter Valve Rough-in Depth Maximum: 4 1/4"
 Diverter Valve Rough-in Depth Minimum: 3 1/4"
 Escutcheon Primary Material: Brass
 Fittings Hole Diameter: 4 1/2"
 Depth / Width: 2 5/8"
 Height: 5 1/2"
 Integrated Diverter: N
 Integrated Spray: N
 Length: 5 1/2"
 Number of Handles: One
 Pivot: N
 Primary Material: Brass
 Spout Swivel: N
 Spray Included in Unit: N
 Suggested Application: Bath

INSPIRATION

Pure Modernism. Like minimalist works of art, the elegant proportions of these light, fluid elements bring sculptural reference to a room.

CODES & STANDARDS

Code # FLSV10: Complies with ASME A112.18.1/CSA B125.1, ASTM E 1621-05, ANSI A117.1 ADA. Certified with IAPMO, cUPC & State of MA

PRODUCT FEATURES

Lever Handles

A solid brass trim plate features engraved graphic TEMPERATURE along with H and C markings

Requires 1/2" valve rough GUTH56 (USA) or GU56TH (UK) sold separately

Allows bather to adjust temperature of all waterway outlets, features anti-scald protection through an integrated high limit safety stop

This item is stocked in a Chrome, Nickel, and Graphite finishes

CERTIFICATIONS



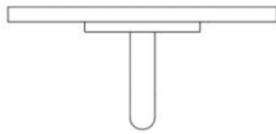
PRODUCT (NOTES)

Requires 1/2" valve rough GUTH56 (USA) or GU56TH (UK) sold separately

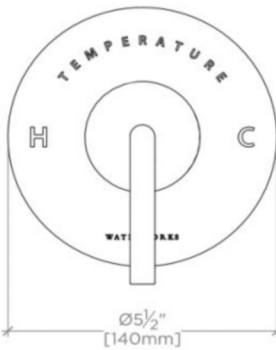
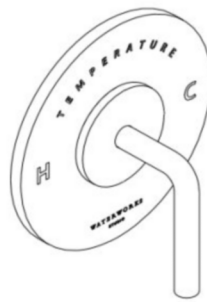
FLYTE

FLTH10

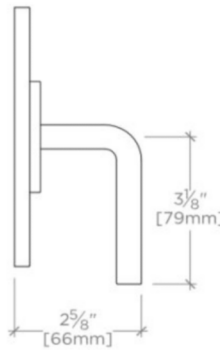
Flyte Thermostatic Control Valve Trim with Metal Lever Handle



TOP VIEW SCALE: 3"=1'-0"



FRONT VIEW SCALE: 3"=1'-0"



SIDE VIEW SCALE: 3"=1'-0"