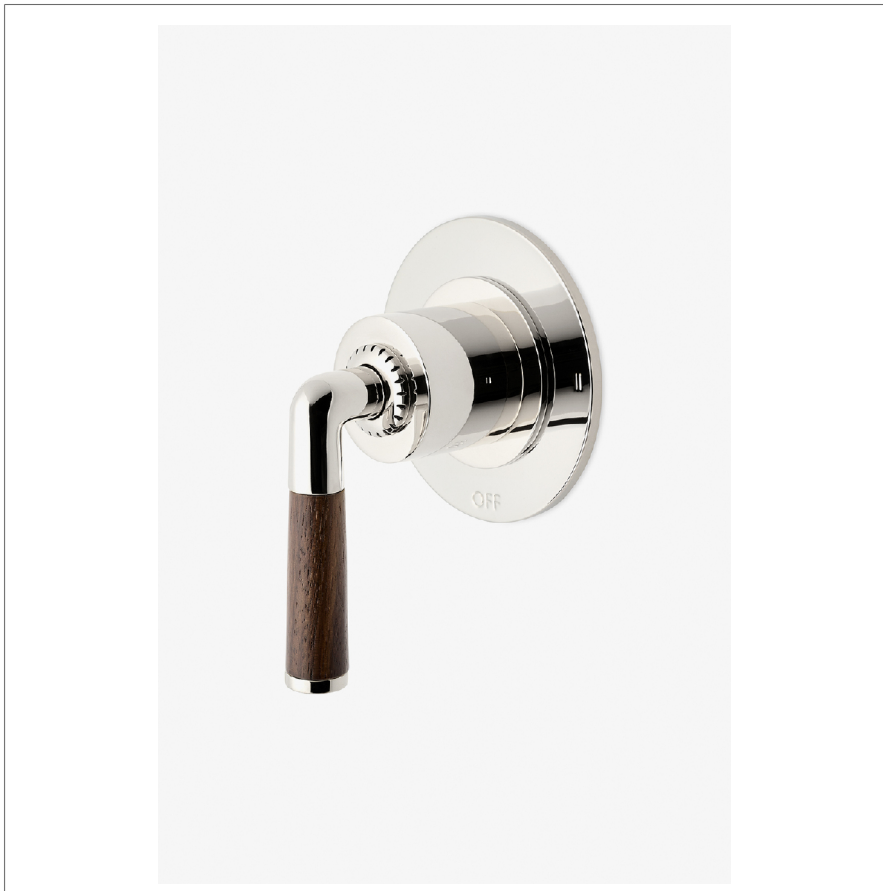


HENRY CHRONOS

CN2T14

Henry Chronos Two Way Diverter Valve Trim for
Thermostatic with Roman Numerals and Walnut Lever
Handle



SHOWN IN HENRY CHRONOS TWO WAY DIVERTER VALVE TRIM FOR THERMOSTATIC WITH ROMAN NUMERALS AND WALNUT
LEVER HANDLE | CN2T14

TECHNICAL DETAILS

Fittings Hole Diameter: 2"
Handle Turn Angle: Quarter Turn Each Way
Number Of Holes: One Hole
Primary Material: Brass

INSPIRATION

Inspired by dive watches, Henry Chronos radiates design prowess and technical precision. Chronos retains the design integrity of our original, iconic Henry collection, while imbuing it with modern details and exquisite materials.

CODES & STANDARDS

ASME A112.18.1/CSA B125.1, State of MA

PRODUCT FEATURES

Features Walnut Lever Handle

For Use With a Thermostatic Shower System and Two Waterway Outlets

Features Roman Numerals Representing Outlet Position

Stocked in Brass, Chrome and Nickel

Requires Rough Valve, Sold Separately: GUDV2T

CERTIFICATIONS

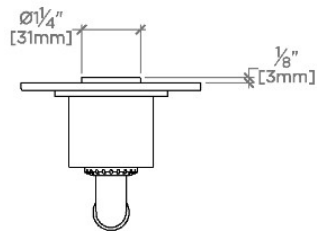


PRODUCT (NOTES)

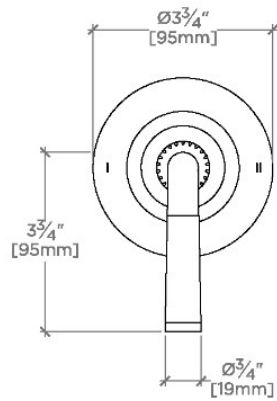
HENRY CHRONOS

CN2T14

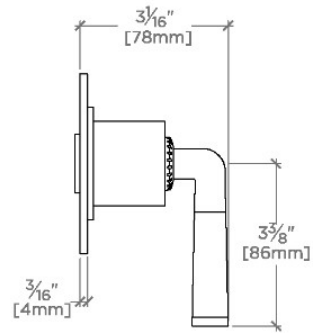
Henry Chronos Two Way Diverter Valve Trim for
Thermostatic with Roman Numerals and Walnut Lever
Handle



TOP VIEW SCALE: 3"=1'-0"



FRONT VIEW SCALE: 3"=1'-0"



SIDE VIEW SCALE: 3"=1'-0"