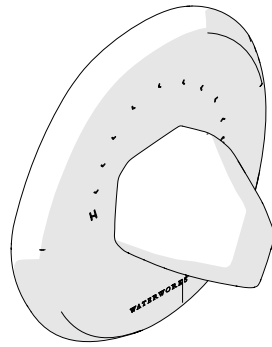
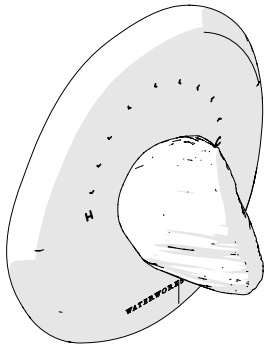


STYLE No. ISTH01
with Metal Petra Handle

STYLE No. ISTH05
with Metal Geode Handle



SPECIFICATIONS:

Control Valve Rough-in Depth Min: 3-1/8" [79mm]
Fittings Hole Diameter: Ø5-1/4" [133mm]
Hot Limit Safety Stop: Yes

REQUIRED PLUMBING DETAILS:

Universal 3/4" Thermostatic Valve
STYLE No. GUTH37

IMPORTANT:

- To ensure this product is installed properly, you must read and follow these guidelines.
- The owner/user of this product must keep this information for future reference.
- This product is intended to work with the Universal 3/4" Thermostatic Valve (Style No. GUTH37 - SOLD SEPARATELY) which features anti-scald protection.
- The risk of scalding exists until the installer has properly calibrated/adjusted the temperature setting during final trim installation.
- The Universal 3/4" Thermostatic Valve (Style No. GUTH37) only mixes hot and cold water. It does not have volume or shut-off capabilities. A diverter or wall valve (SOLD SEPARATELY) control on/off/volume and must be installed for each fitting that will have water flowing to it.
- This product must be on-site prior to rough-in. This allows the installer to visualize the installation.
- This product must be installed by a professional licensed contractor.
- Be sure your installation conforms to all federal, state, and local codes. In the State of Massachusetts, all installations must comply with the rules and regulations set forth within 248 CMR.

- Inspect the product to ensure you have all the parts required for proper installation.
- Refer to the specification and assembly drawings attached. Product is sold partially assembled but shown fully disassembled for illustrative and service purposes only.
- Use only a strap wrench or protected/smooth-jaw wrench on any finished surface.
- The use of certain plumber's putty may stain stone or tile surfaces.

FLUSH OUT THE SYSTEM:

1. Ensure that the supply lines are flushed prior to final trim installation. The Universal 3/4" Thermostatic Valve (sold separately) includes a pre-installed FLUSH PLATE.
2. Refer to the Installation Guidelines of the Universal 3/4" Thermostatic Valve for further information on how to properly flush the supply lines.

CARTRIDGE INSTALLATION:

- See Figure - 01 for Steps 3 - 5

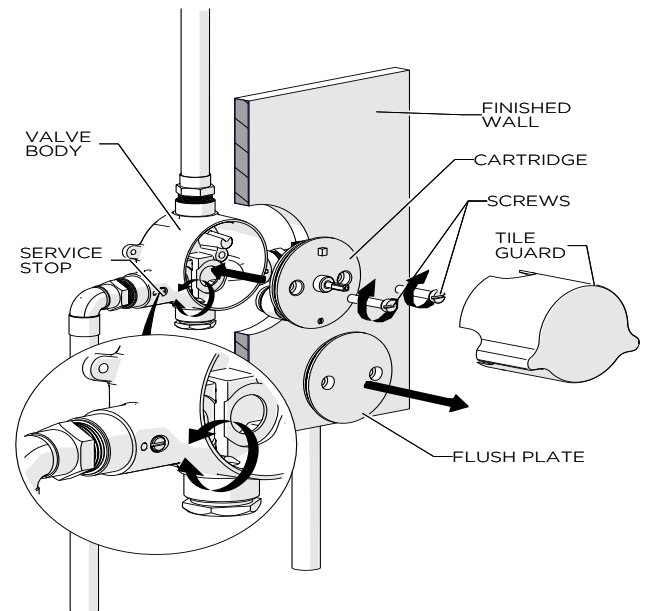


FIGURE - 01

3. After the supply lines have been flushed turn off the water supply, close the SERVICE STOPS and unthread the 2 COVER SCREWS to remove the FLUSH PLATE.
4. Install the CARTRIDGE using the 2 SCREWS. Make sure the SCREWS include the O-RINGS attached to prevent leaks.
5. Turn on the water supply, open the SERVICE STOPS and check for leaks.

These guidelines have been prepared for the professional contractor to aid in the installation of:
ISLA THERMOSTATIC CONTROL VALVE TRIM WITH METAL PETRA HANDLE (STYLE No. ISTH01) &
ISLA THERMOSTATIC CONTROL VALVE TRIM WITH METAL GEODE HANDLE (STYLE No. ISTH05)
All dimensions are based on original specification and are subject to change and variation.
Please consult your Design Associate for current specifications.

W A T E R W O R K S

TRIM INSTALLATION:

- Ensure both SERVICE STOPS on the VALVE are open.
- See Figure - 02 for Steps 6 - 9

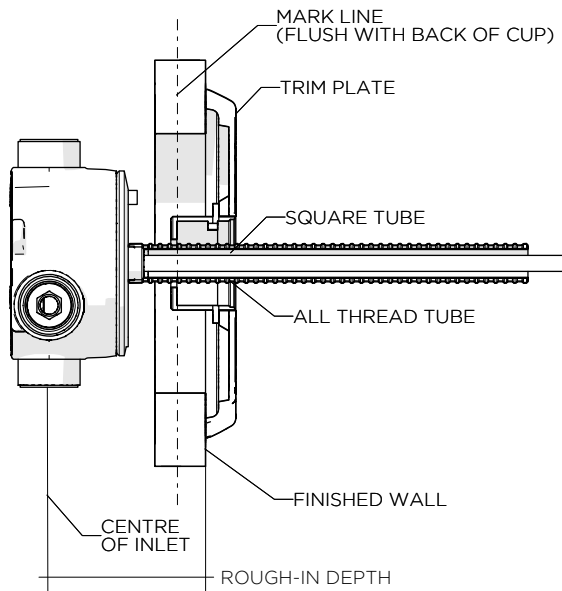


FIGURE - 02

6. Thread the ALL THREAD TUBE onto the CARTRIDGE until it is fully seated then slide the TRIM PLATE over the TUBE, firmly holding it against the finished wall and making a mark at the bottom of the CUP.
7. Remove the TRIM PLATE and ALL THREAD TUBE then cut the TUBE at the point marked in Step 6.
 - NOTE: Do **NOT** cut the end of the TUBE that has the internal threads.
8. Place the SQUARE TUBE onto the CARTRIDGE STEM until it is fully seated then slide the TRIM PLATE over the TUBE, firmly holding it against the finished wall and making a mark at the bottom of the CUP.
 - NOTE: When seated properly onto the CARTRIDGE STEM, the SQUARE TUBE will have rotational resistance.
9. Remove the TRIM PLATE and SQUARE TUBE then cut the TUBE at the point marked in Step 8.
 - See Figure - 03 for Steps 10 - 12
10. Thread the ALL THREAD TUBE back onto the VALVE until it is fully seated.
11. Insert the SQUARE TUBE into the ALL THREAD TUBE then by feel, make sure it slides over the CARTRIDGE STEM and is fully seated.
 - NOTE: When seated properly onto the CARTRIDGE STEM, the SQUARE TUBE will have rotational resistance.

12. Slide the TRIM PLATE over the ALL THREAD TUBE and firmly hold against the finished wall.
 - NOTE: A GASKET for the TRIM PLATE is provided. If desired, a bead of caulk or a clear silicone may be applied where the plate contacts the finished wall. The use of certain plumber's putty may stain stone or tile surfaces.

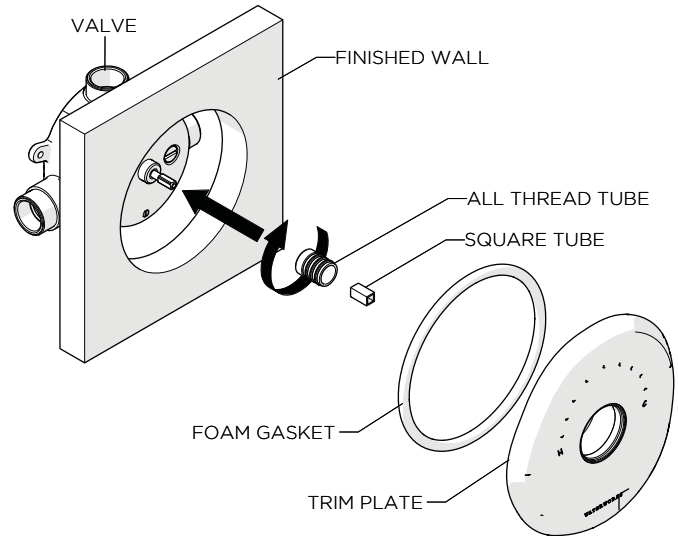


FIGURE - 03

- See Figure - 04 for Steps 13 - 19

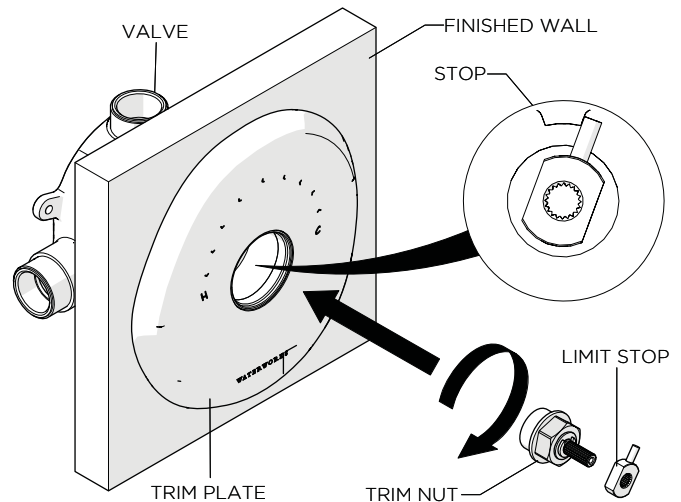


FIGURE - 04

13. Thread the TRIM NUT onto the ALL THREAD TUBE and securely tighten using a 23mm hex wrench. The TRIM NUT will need to properly align with the SQUARE TUBE in order for the NUT to thread onto the ALL THREAD TUBE.

These guidelines have been prepared for the professional contractor to aid in the installation of:
 ISLA THERMOSTATIC CONTROL VALVE TRIM WITH METAL PETRA HANDLE (STYLE No. ISTH01) &
 ISLA THERMOSTATIC CONTROL VALVE TRIM WITH METAL GEODE HANDLE (STYLE No. ISTH05)
 All dimensions are based on original specification and are subject to change and variation.
 Please consult your Design Associate for current specifications.

WATERWORKS

TEMPERATURE CALIBRATION:

- The risk of scalding exists until the installer has properly calibrated/adjusted the temperature setting.
- 14. Turn on the water supply and open a diverter or wall valve to run water through the thermostatic valve.
- 15. Slowly rotate the TRIM NUT STEM clockwise to attain full cold then rotate it counter-clockwise to attain full hot. Verify a full range of temperatures exists.
- NOTE: It is approximately 1 complete rotation from full cold to full hot.
- 16. With water running, rotate the TRIM NUT STEM to adjust the temperature to the maximum desired bathing temperature, verified with a thermometer. Turn the water off and make sure not to change this temperature setting.
- 17. Place the limit stop onto the trim nut so that the LIMIT STOP makes contact with the STOP on the TRIM PLATE and turn off the water.

INSPECT THE INSTALLATION:

- 18. Turn the LIMIT STOP clockwise then turn the water on and confirm the LIMIT STOP is functioning properly by turning it counter-clockwise at which point it should stop.
- 19. Verify the temperature to be the maximum temperature set in Step 16. If it is not the correct temperature, repeat the calibration procedures.

FINISH THE INSTALLATION:

- See Figure - 05 and 06 for Steps 20 - 22.

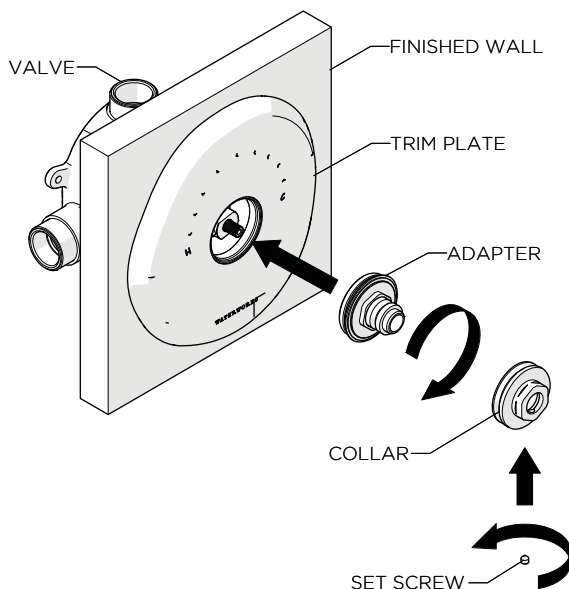


FIGURE - 05

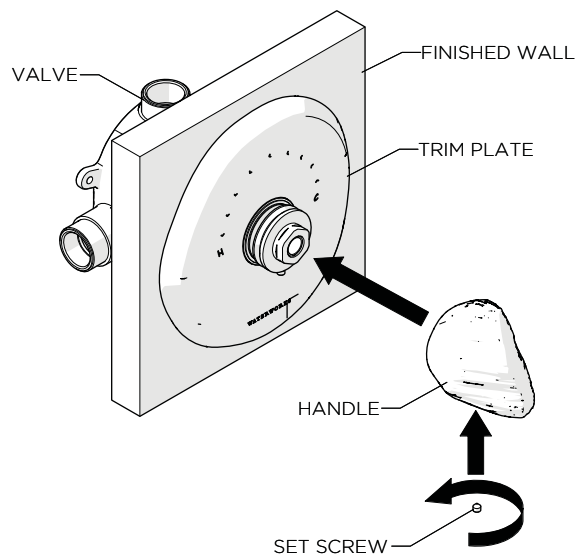


FIGURE - 06

- 20. Place the ADAPTER onto the TRIM NUT STEM then thread the ADAPTER into the TRIM PLATE. Securely tighten using a 24mm wrench.
- 21. Thread the COLLAR onto the ADAPTER and securely tighten the SET SCREW using a 2.5mm HEX KEY.
- 22. Place the HANDLE over the COLLAR in the desired orientation and securely tighten the SET SCREW using a 2.5mm HEX KEY.
- 23. Turn and operate the HANDLE to ensure the LIMIT STOP is working properly.
- If further assistance is required, please contact Product Support at 1-800-927-2120 Monday through Friday, 8am - 6pm EST.
- Refer to the separate Service Parts Documents for available replacement parts.

These guidelines have been prepared for the professional contractor to aid in the installation of:
ISLA THERMOSTATIC CONTROL VALVE TRIM WITH METAL PETRA HANDLE (STYLE No. ISTH01) &
ISLA THERMOSTATIC CONTROL VALVE TRIM WITH METAL GEODE HANDLE (STYLE No. ISTH05)
 All dimensions are based on original specification and are subject to change and variation.
 Please consult your Design Associate for current specifications.